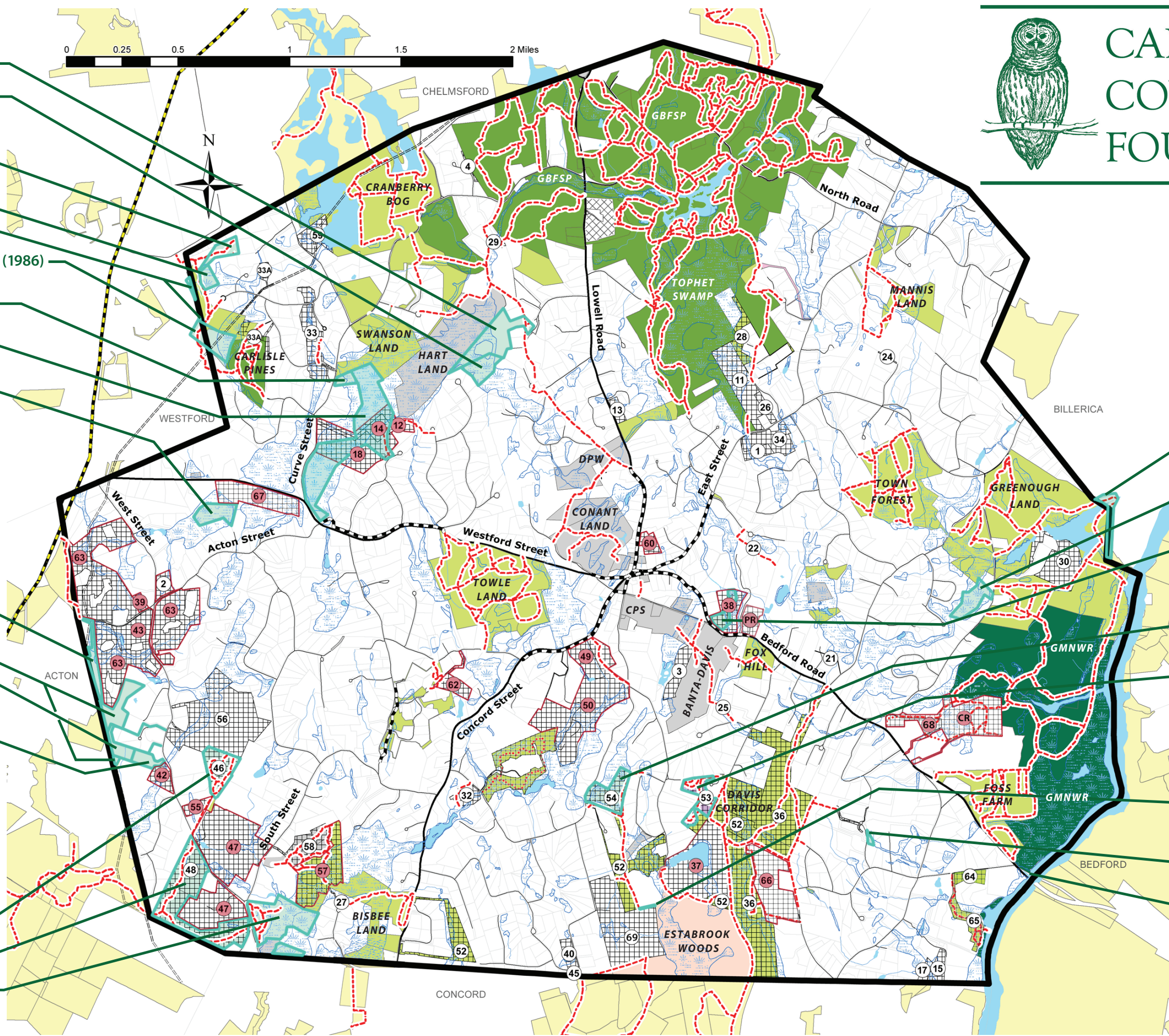


# CARLISLE CONSERVATION FOUNDATION

- 29.65 ACRES Ember Lane Cluster (1985)
- 29.65 ACRES Clark Woodlot (1995)  
*(William G. Clark Land)*
- NW • 25.26 ACRES Holmes-Avery (1997)
- Erickson (2000)
- MacAfee *(Westford)* (1989)
- Pines Woodlot *(Carlisle/Westford)* (1986)
- Swanson Lot (1979)  
2.8 ACRES *(Carol Basmajian Land)*
- Wilson Land (2021)  
56 ACRES
- Ryan (1967)  
9 ACRES
- 12/14/18 • Wilson (1981-83)
- 67 • Sorli (2017)
- 39 • Reichenbach (1999)
- 43 • Valentine (2001)
- 63 • Valentine (2008)
- WEST • 25.94 ACRES Cote-Foster (2004)
- Pannell (2001)
- Fleming (1999, 2001)  
*\*small unprotected parcel in Acton*
- Taylor (2001)
- 42 • Rundlett (2000)
- 47 • (Benfield Trust) (2005)
- 55 • Parker/Baxter (2004)
- 57 • Town of Carlisle (2007)  
*Benfield Conservation Land*
- SW • 92.68 ACRES Benfield Hill (2000, 2005)
- Ben's Woods (2000, 2005)
- Spencer Brook Reservation (1960, 1962)



**2023**  
CCF-owned Properties  
CCF-held CRs

- 49 • Clark (2003) *(Clark Farm)*
- 50 • Wilson (2003)
- 60 • Hilton (2006)
- 62 • Stalker (2007)
- Greenough *(in Billerica)* (1972)  
8.22 ACRES
- Pages Brook Reservation (1966)  
6 ACRES
- Bates Farm Lot (1982) 6 ACRES
- 38 • Seawright/Shohet/Knight (1999)  
*("PR" is renewable Preservation Restriction on 6.28 acre Bates Farm Kimballs Ice Cream lot)*
- Poole's Swamp (1998)  
14.5 ACRES
- Malcolm Preserve *(w/TTOR)* (1996)  
10.61 ACRES
- 68 • Woodward (2019)
- Next CCF CR • Town of Carlisle  
*(Woodward)*
- McCormick Connector (2004)  
*(Harte Bypass)*  
.18 ACRES
- Suffolk Lane Lot (1991)  
.24 ACRES
- Bose Property (2012)  
.21 ACRES
- 37 • Sachs (1998) *(w/TTOR)*
- 66 • Endicott/Thomas (2016)  
*(Woodhaven Farm)*